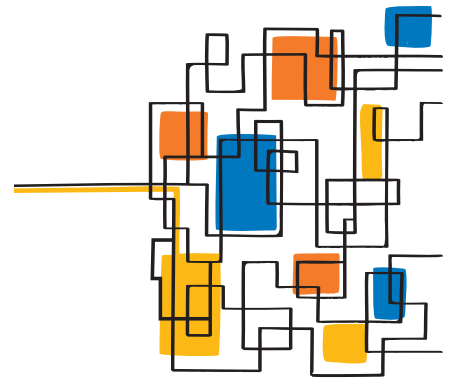




NetApp®



## Datasheet

# OnCommand System Manager

Simple, powerful setup and management of NetApp storage systems

### KEY BENEFITS

#### Simplified Management

Manage NetApp® systems through an easy-to-use browser-based system.

#### Fast, Simple Configuration

Begin serving data minutes after installation—wizards and workflows simplify common tasks.

#### Powerful Administrative Capabilities

Easily configure and provision storage for file sharing and application workloads.

#### Clustered Storage Management

Manage clustered Data ONTAP® 8.1x software.

### The Challenge

IT organizations face a lot of complexity in deploying and managing technologies for virtualization, cloud, wireless, mobile, and analytics solutions. Wouldn't it be nice if you could manage your storage resources without having to be an expert in that, too?

What these teams have asked for is a storage management solution that provides the simplicity and efficiency needed to let them keep pace with data growth that's rapidly outpacing IT budget and staff growth while providing powerful administration capabilities for the latest storage technology, including flash media and scale-out clustered storage.

### The Solution

OnCommand® System Manager is the simple yet powerful browser-based management tool that enables administrators to easily configure and manage individual NetApp storage systems or clusters of systems.

System Manager is designed with wizards and workflows, simplifying common storage tasks such as creating volumes, LUNS, qtrees, shares, and exports, which saves time and prevents errors. System Manager works across all NetApp storage: FAS2000, 3000, and 6000 series as well as V-Series systems.

### Fast, simple configuration

With System Manager, you can rapidly configure NetApp storage systems, typically within minutes after installation. Automated storage discovery further simplifies locating and configuring existing systems.

The management utility is Web based, can be installed on a laptop or server, and runs on either a Windows® or a Linux® environment.

### Simplified management

System Manager provides simple-to-use, workflow-based wizards to automate the most common device management tasks. A dashboard unifies important system information, and this one view allows management of both SAN and NAS storage.

Real-time system performance is displayed in a single multiframe display, including CPU utilization, I/O throughput, operations, and latency.

### Powerful administrative capabilities

System Manager lets administrators easily control the powerful capabilities of NetApp storage systems: flash, disks, pooled storage, shares/exports, Snapshot™ copies, mirroring, replication, and network configuration. Both SAN (iSCSI/FC/FCoE) and NAS (CIFS/NFS) storage can be managed through

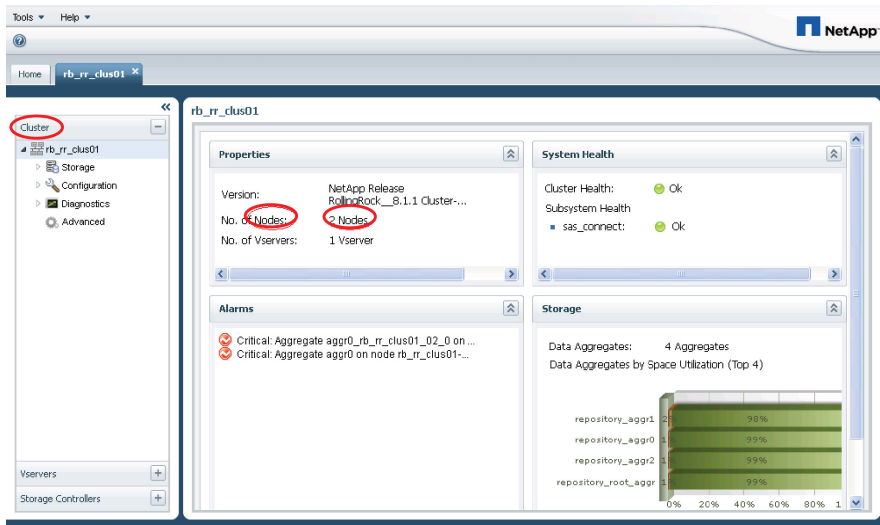


Figure 1) The OnCommand System Manager dashboard shows at-a-glance system status for one storage system or clusters of systems, for up to petabytes of capacity.

the same view, as well as storage for VMware® environments.

### Features

System Manager leverages the features found in clustered Data ONTAP. It allows management of Flash Cache™ intelligent caching to speed system performance; Flash Pool™ intelligent caching, which comprises aggregates of both flash and hard-drive capacity; Infinite Volumes, which are single namespaces that can contain up to 18PB of data; and SnapVault® replication for disaster recovery protection.

### Clustered scale-out storage

System Manager enables administration of NetApp unified storage at scale with the management of clustered Data ONTAP 8.1x. This clustering delivers new levels of nondisruptive operations, along with scalability and manageability for NetApp storage. Using System Manager for cluster management helps enable efficient and error-free administration.

### OnCommand System Manager Key Features

- Intuitive browser-based graphic user interface
- Easy wizard-driven configuration
- Storage provisioning and disk aggregate management
- Support of all NetApp FAS and V-Series systems
- CIFS, NFS, iSCSI, FC, FCoE configuration in one view
- Flash Pool and Flash Cache
- Content repository / Infinite Volume support
- Capacity-optimized disk shelves
- Snapshot, SnapMirror®, and SyncMirror® management
- SnapVault and SnapLock® technology support
- vFiler® unit and Vserver management
- VMware ESX® integration
- Active Directory® and LDAP
- Support of Data ONTAP 7.3.7 and beyond
- Support of clustered Data ONTAP 8.1x

- Support for up to 24 nodes
- Secure access via password and RSH
- Secure communications via SSH and SSL

### Learn More About OnCommand System Manager

Go to <http://www.netapp.com/us/products/management-software/system-manager.html> to find out more about the OnCommand System Manager product.

### About NetApp

NetApp creates innovative storage and data management solutions that deliver outstanding cost efficiency and accelerate business breakthroughs. Discover our passion for helping companies around the world go further, faster at [www.netapp.com](http://www.netapp.com).

Go further, faster®



[www.netapp.com](http://www.netapp.com)

© 2012 NetApp, Inc. All rights reserved. No portions of this document may be reproduced without prior written consent of NetApp, Inc. Specifications are subject to change without notice. NetApp, the NetApp logo, Go further, faster, Data ONTAP, Flash Cache, Flash Pool, OnCommand, SnapLock, SnapMirror, Snapshot, SnapVault, SyncMirror, and vFiler are trademarks or registered trademarks of NetApp, Inc. in the United States and/or other countries. Windows and Active Directory are registered trademarks of Microsoft Corporation. Linux is a registered trademark of Linus Torvalds. VMware and ESX are registered trademarks of VMware, Inc. All other brands or products are trademarks or registered trademarks of their respective holders and should be treated as such. DS-2932-1212

Follow us on: